

First steps after the organisms have arrived:

Open the shipment immediately. Completely remove the lid of the transport vessel and the place it loosely back on the vessel. This ensures gas exchange between the culture medium and the air. Do not leave the transport vessel uncovered, as this may lead to contamination and impurities.

Culture vessels and culture medium

Petri dishes are particularly suitable as of the culture vessels, as they allow easy monitoring of the culture under a microscope at 20-40x magnification. A suitable culture medium is still Volvic mineral water with 5 % soil infusion (item no. DCS3762).

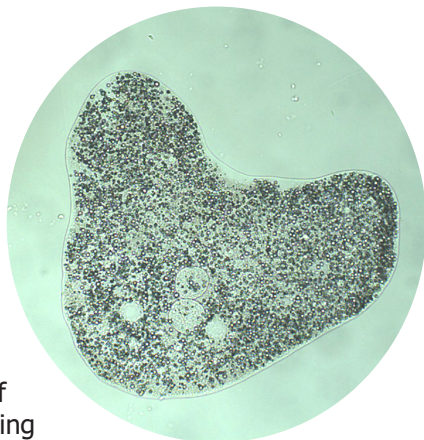
Feeding and care of amoeba

Amoeba proteus is a predator and must be supplied with food organisms. *Colpidium spec.* (item no. DCS9114) are much better suited than *Paramecium caudatum* (item no. DCS9110).

After feeding, the density of the food organisms should be up to four times higher than the number of *amoebas*. If the density of the food organisms decreases, additional feeding is required.

Additionally, a grain of rice can be added to *amoeba* culture. This promotes bacterial growth and provides food for the food organisms.

The culture should be renewed every 8-12 weeks.



The culture should be kept in low light or darkness. Temperatures around 20°C are optimal.