

First steps after the organisms have arrived:

Open the shipment immediately. Completely remove the lid of the transport vessel and then place it loosely on the top of the vessel. This ensures gas exchange between culture medium and the air. Do not leave the transport vessel uncovered to avoid contamination and impurities.

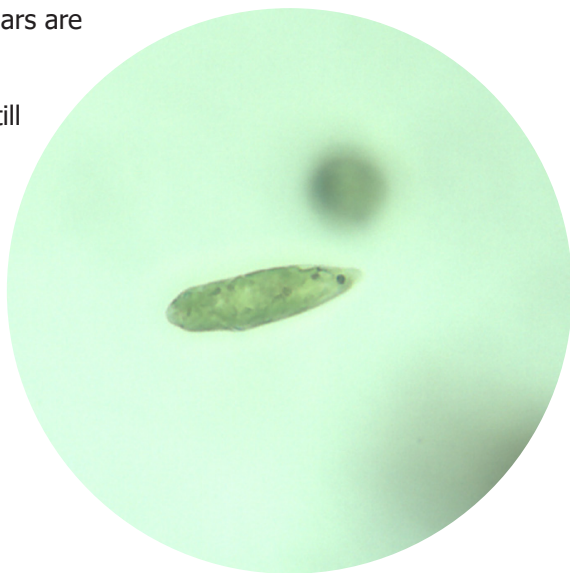
Culture vessels and culture medium

For cultivation, Erlenmeyer flasks sealed with aluminum foil or preserving jars are suitable.

A well-suited culture medium is still Volvic mineral water, to which 1 ml of liquid flower fertilizer or 7.5 ml of Alga-Gro® medium concentrate is added per 100 ml.

Alternatively, a culture solution with 3 to 5 wheat kernels per 200 ml of still Volvic mineral water can be used.

A new culture solution should be prepared every four weeks.



The culture must be kept in a bright location without direct sunlight at a temperature of 20 °C to 22 °C.