

## Care instructions:

# *Paramecium caudatum*

### First steps after the organisms have arrived:

Open the shipment immediately. Completely remove the lid of the transport vessel and the place it loosely back on the vessel. This ensures gas exchange between the culture medium and the air.

Do not leave the transport vessel uncovered, as this may lead to contamination and impurities.

### Culture vessels and culture medium

Petri dishes, Erlenmeyer flasks sealed with aluminium foil, or preserving jars with a loosely placed, not tightly closed lid can be used as culture vessels.

A suitable culture medium is still Volvic mineral water.

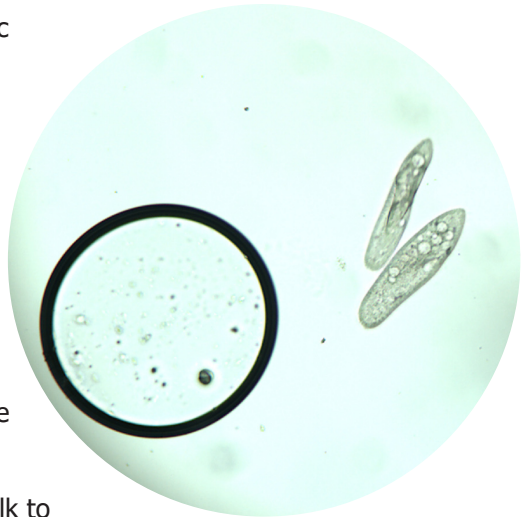
### Feeding and care

To promote good bacterial growth, add 2-3 grains of rice and one lentil to 100ml of Volvic water. The rice grains and lentil should be replaced after 2-3 weeks.

Using 3-5 pieces of green spelt leads to rapid reproduction. In this case, additional pieces may need to be added more frequently.

For a milk culture, add one drop of milk to 200ml of Volvic water and feed again once the water has become clear.

The culture should be renewed every 3-4 weeks.



**The culture should be kept in low light or darkness. Temperatures around 20°C are optimal.**